

The widest range of treatment workflows

3Shape is renowned for its unrivaled range of treatment workflows covering the diverse needs and preferences of dentists and their patients. Choose the right software package according to your needs and later expand your portfolio with more services to stay ahead. See 3shape.com/lab for more details.

Single crowns



Full anatomical bridges



Temporaries



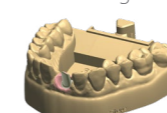
Virtual diagnostic wax-ups including models



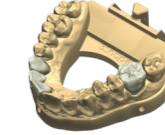
Single arch dentures



Implant models with analogs



Crown and bridge models



Clear Aligners



Maryland Bridges



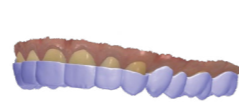
Copings



Table-tops and non-prepared veneers



Splints



Dentures



Implant bars



Screw retained bridges



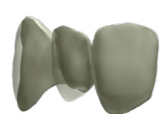
Implant planning and surgical guides



Framework bridges



Crowns and bridges with facial cutback



Primary telescope



Secondary telescope



Removable partial dentures



Screw retained crowns with cutback



Customized abutments



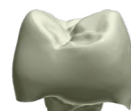
Orthodontics and appliances



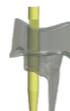
Inlays, onlays and veneers



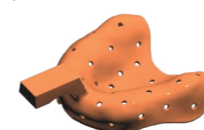
Post retained crown (Richmond crown)



Standard post and core



Customized impression trays



Implant frame bridges



Screw retained crowns



Positioning guides



Customized impression trays



Digital Smile Design & RealView



Customized impression trays for implant cases



IvoSmile®

